



Association of Metformin with Mortality in COVID-19 Patients: A Systematic Review and Meta-Analysis

Rizwana Parveen¹ Pinki Mishra¹ Reva Luthra¹ Ram Bajpai² Nidhi Agarwal¹

¹ Centre for Translational and Clinical Research, School of Chemical & Life Sciences, Jamia Hamdard, New Delhi, India

² School of Medicine, Keele University, Staffordshire, United Kingdom

Address for correspondence Nidhi Agarwal, PhD, Centre for Translational and Clinical Research, School of Chemical & Life Sciences, Jamia Hamdard, New Delhi-110062, India (e-mail: nidhi.bharal@gmail.com).

Ann Natl Acad Med Sci (India) 2023;59:13–20.

Abstract

Studies have demonstrated high prevalence of mortality in coronavirus disease (COVID-19) patients with type 2 diabetes mellitus; however, the effects of antidiabetic pharmacotherapy on COVID-19 complications need further exploration. The aim of the study was to explore the association of metformin use and mortality in COVID-19 patients. A literature search was conducted using the databases Medline (via PubMed) and Cochrane Central Register of Controlled Trials until February 09, 2021. Nine studies were included in the meta-analysis, including 12,684 COVID-19 patients. The meta-analysis suggested 37% lower risk of mortality in patients receiving metformin (risk ratio: 0.63; 95% confidence interval: 0.50–0.78; $p < 0.001$). However, no significant difference in hospitalization days between the two groups ($p = 0.197$) was observed. The analysis revealed significantly lower risk of having obesity ($p < 0.001$), hypertension ($p < 0.001$), heart failure ($p < 0.001$), and cerebrovascular disease ($p = 0.015$) in the group receiving metformin. The analysis also demonstrated significantly lower risk of using anticoagulants ($p = 0.015$), diuretics ($p < 0.001$), and antiplatelets ($p = 0.010$) in patients receiving metformin. Our findings suggest that metformin use decreases mortality in COVID-19 patients. However, randomized studies demonstrating the consequences of metformin use are needed to understand the magnitude of the beneficial effects of metformin.

Keywords

- ▶ COVID-19
- ▶ hospitalization
- ▶ metformin
- ▶ mortality
- ▶ meta-analysis
- ▶ type 2 diabetes
- ▶ SARS-CoV-2

Introduction

The novel coronavirus disease (COVID-19), now a worldwide public health concern, is associated with varied fatality.¹ Some of the recognized risk factors for poor prognosis of COVID-19 patients include age (>65 years), chronic obstructive pulmonary disease (COPD), hypertension, cardiovascular disease, and type 2 diabetes mellitus.² Although type 2 diabetes

mellitus has been reported as a risk factor for COVID-19, the effect of pharmacologic agents used to treat type 2 diabetes mellitus on COVID-19 outcomes remains unclear.

Metformin, the first-line treatment for type 2 diabetes mellitus with adequate safety profile, is being suggested for treatment of COVID-19 as a host-directed therapy.³ A retrospective study highlighted metformin use to be associated

article published online
February 22, 2023

DOI <https://doi.org/10.1055/s-0042-1760353>.
ISSN 0379-038X.

© 2023. National Academy of Medical Sciences (India). All rights reserved.

This is an open access article published by Thieme under the terms of the Creative Commons Attribution-NonDerivative-NonCommercial-License, permitting copying and reproduction so long as the original work is given appropriate credit. Contents may not be used for commercial purposes, or adapted, remixed, transformed or built upon. (<https://creativecommons.org/licenses/by-nc-nd/4.0/>)

Thieme Medical and Scientific Publishers Pvt. Ltd., A-12, 2nd Floor, Sector 2, Noida-201301 UP, India

with a higher risk of severe COVID-19.³ On the contrary, some retrospective cohort studies have revealed a significant reduction in mortality with metformin use in type 2 diabetes mellitus patients diagnosed with COVID-19.^{1,4-6} The mechanism by which metformin seems to reduce the mortality risk of COVID-19 patients remains unclear. However, its anti-inflammatory actions are hypothesized to be one of the mechanisms.⁷⁻⁹

Several studies have demonstrated higher prevalence of mortality in type 2 diabetes mellitus patients with COVID-19^{1,4-6}; however, the effects of antidiabetic pharmacotherapy on COVID-19 complications need further exploration. Studying the probable effects of pharmacologic agents on clinical prognosis may provide an important understanding to design further studies related to mitigating the risk factors.² Thus, in this systematic review and meta-analysis, we aimed to explore the association of metformin use and mortality in COVID-19 patients. We hypothesized that mortality would be lower in COVID-19 patients receiving metformin.

Methods

We followed the Preferred Reporting Items for Systematic Review and Meta-Analyses (PRISMA) guidelines for systematic reviews¹⁰ and Meta-analyses Of Observational Studies in Epidemiology (MOOSE)¹¹ guidelines in designing, conducting, and reporting of this systematic review. The systematic review protocol was registered at PROSPERO (registration ID: CRD42020204384).

Data Sources and Searches

We searched Medline (via PubMed) and Cochrane Central Register of Controlled Trials using the keywords “COVID-19 and metformin” and “2019 novel coronavirus and Metformin.” Additional search was done on LitCovid using the keyword “Metformin” until February 08, 2021. We also searched gray literature using Google Scholar and reference list of eligible articles.

Inclusion and Exclusion

The studies comparing the effect of metformin use on mortality in COVID-19 patients with existing type 2 diabetes mellitus were included. We excluded duplicate publications, reviews, editorials, case reports, letters, meta-analysis, protocols, and studies not reporting the required data. Studies in language other than English were also excluded because of lack of understanding of the data. First author (RP) searched the databases and screened articles for eligibility. Another author (PM) double checked all the included articles and any dispute was resolved by consensus.

Quality Assessment

Two reviewers (RP and RL) assessed the quality of data in the included studies using the National Institutes of Health (NIH) quality assessment tools.¹² The NIH tool is comprehensive and widely accepted for assessment of data quality specially in observational study designs. The tools are specific to

individual types of included study designs and are designed to assist reviewers in focusing on concepts that are key to critical appraisal of the internal validity of a study. The tools include items for evaluating research question, objective and study population, selection of subjects, sample size justification, exposure, and outcome measures. Quality reviewers could select “yes,” “no,” or “cannot determine/not reported/not applicable” in response to each item on the tool. The overall quality of included studies was rated as good, fair, and poor, and the results were incorporated in the meta-analysis.¹²

Data Extraction

Data were extracted using a standardized data extraction in Excel and independently checked by a second reviewer (PM) for accuracy. The following variables were extracted: name of the first author, year of publication, study design, age, gender, number of mortalities, comorbidities, and concomitant medications.

Data Synthesis

An exploratory meta-analysis was performed to understand the magnitude and direction of effect estimate. For dichotomous outcomes, risk ratios (RRs) were calculated and presented with respective 95% confidence intervals (CIs). Mantel–Haenszel random-effects meta-analysis using DerSimonian and Laird method was used to pool RRs.¹³ Continuous outcomes are presented using mean difference (MD) and 95%CIs and pooled using the inverse variance approach. Meta-analysis for each continuous outcome was processed using a random effects model (using DerSimonian and Laird method) since heterogeneity among studies was expected. Heterogeneity between studies was assessed using the χ^2 -based Cochran's Q statistic ($p < 0.1$ considered as the presence of heterogeneity) and I-squared (I^2) statistics ($>50\%$ representing moderate-high heterogeneity).¹³ Forest plot was produced, and subgroup analysis was conducted according to the study design. The 95% prediction interval (PI) was calculated, which estimates the uncertainty bounds for a new study evaluating that same association by considering between-study heterogeneity.¹³ Across the meta-analysis, the statistical significance was set as a p -value of <0.05 . Publication bias was not assessed as the total number of included studies in meta-analysis was less than 10.¹⁴

Results

Search Results

The systematic search yielded a total of 135 publications using the keyword “Metformin and COVID-19.” After removing duplicates, 86 articles were found to be potential publications for screening. A total of 76 articles (42 review articles and 14 not reporting the required data) were excluded after the application of predefined inclusion and exclusion criteria. Ten studies^{4,15-23} were included for systematic review, while 9^{4,15-18,20-23} were included in the meta-analysis (► Fig. 1). All included studies were retrospective cohort studies.

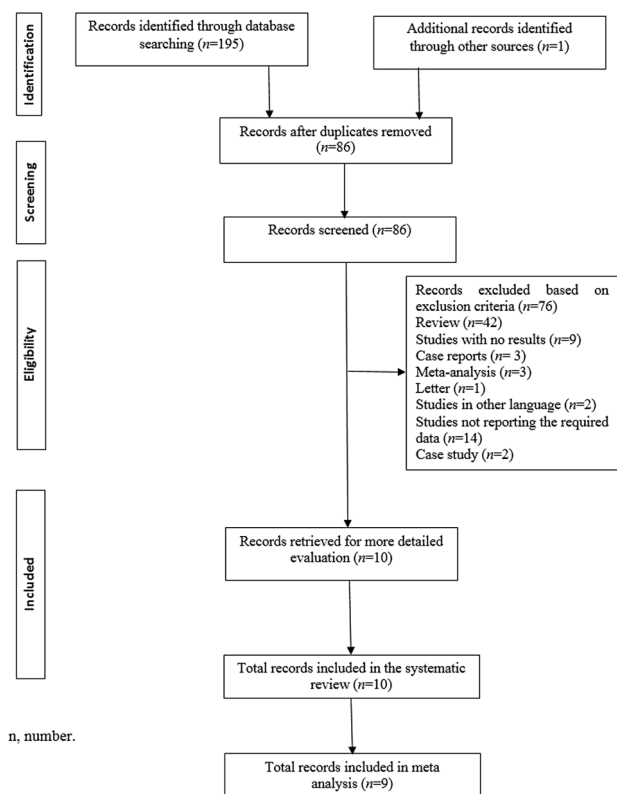


Fig. 1 Prisma flowchart. n, number.

Study Characteristics

All the included studies were retrospective cohort studies.^{4,15–20,22,23} Most of the studies were conducted in China. The studies enrolled a total of 12,684 patients (metformin group: 5,819; no-metformin group: 6,865). The sample size of the studies varied from 120 to 6,250. The study characteristics are provided in ►Table 1.

Quality Assessment

We assessed the quality of data in the included studies using the NIH quality assessment tools. The quality assessment indicated that included studies were of acceptable quality. All the papers clearly stated the research question or objective, the study population was clearly specified and defined, and all the subjects were selected from the same or similar populations. The detailed result of the quality assessment is provided in the **Supplementary File** (available in the online version).

Association between Metformin Use with Mortality and Hospitalization Days

The analysis of the nine retrospective cohort studies suggested that metformin is associated with lower mortality rate (RR: 0.63; 95% CI: 0.50–0.78; $p < 0.001$; I^2 : 73.9%) with substantial heterogeneity in individual study estimates. The results highlight that mortality was 37% lower in patients receiving metformin (►Fig. 2), while Cheng et al¹⁹ reported no significant difference in the mortalities of individuals between the metformin and the no-metformin groups (adjusted hazard ratio [HR]: 0.87; 95%CI: 0.36–2.12;

$p = 0.757$). Univariate analysis by Pérez-Belmonte et al¹⁸ showed significant association of metformin with mortality (RR: 0.73; CI: 0.58–0.90; $p = 0.004$). However, the multivariate analysis revealed no significant association (RR: 1.10; CI: 0.76–1.60; $p = 0.616$). Multiple logistic regression analysis by Crouse et al¹⁶ revealed that metformin use is an independent factor affecting mortality in COVID-19 patients. Lally et al²³ showed that the patients taking metformin were at significantly reduced hazard of death (adjusted HR: 0.48; 95%CI: 0.28–0.84). Multivariate analysis by Luo et al¹⁵ showed that the use of metformin was negatively correlated with the mortality of type 2 diabetes mellitus patients. Four studies qualified for quantitative analysis of hospitalization days. The analysis revealed no significant difference in hospitalization days between the two groups (MD: 1.07; 95%CI: –0.55 to 2.69; $p = 0.197$; I^2 : 0.0; ►Table 2).

Association between Metformin Use and Laboratory Parameters

The analyzed hematological parameters included white blood cells, neutrophils, lymphocytes, monocytes, platelets, glucose, and eosinophils. The eosinophil level was higher in the group receiving metformin (MD: 0.02; 95%CI: 0.002–0.04; $p = 0.034$). However, no difference was observed in other hematological parameters (►Table 2). Additionally, higher levels were observed for albumin (MD: 2.23; 95%CI: 1.04–3.43; $p < 0.001$), HbA1c (%; MD: 0.70; 95%CI: 0.27–1.13; $p = 0.001$), HbA1c (mmol/L; MD: 1.77; 95%CI: 0.98–2.56; $p < 0.001$), and estimated glomerular filtration rate (eGFR; MD: 3.43; 95%CI: 0.55–6.32; $p = 0.020$) in the group receiving metformin (►Table 2).

Association between Metformin Use with Comorbidities, Clinical Severity, and Oxygen Support

The analysis revealed that the risk of having obesity (RR: 0.53; 95%CI: 0.43–0.65; $p < 0.001$), hypertension (RR: 0.93; 95%CI: 0.91–0.96; $p < 0.001$), heart failure (RR: 0.41; 95%CI: 0.33–0.51; $p < 0.001$), cerebrovascular disease (RR: 0.48; 95%CI: 0.27–0.87; $p = 0.015$), and COPD (RR: 0.71; 95%CI: 0.62–0.81; $p < 0.001$) was significantly lower by 48, 7, 59, 53, and 30%, respectively, in the group receiving metformin. No significant difference was observed in clinical severity between the two groups. The risk of using nasal canula was significantly higher in the group not receiving metformin (RR: 1.44; 95%CI: 1.06–1.97; $p = 0.02$; ►Table 3).

Association between Metformin Use and Concomitant Treatments

The analysis revealed that the risk of using anticoagulants (RR: 0.70; CI: 0.53–0.94; $p = 0.015$), diuretics (RR: 0.69; 95%CI: 0.63–0.76; $p < 0.001$), and antiplatelets (RR: 0.91; 95%CI: 0.84–0.98; $p = 0.010$) was significantly lower by 30, 32, and 10%, respectively, in patients receiving metformin (►Table 3).

Discussion

Emerging evidence suggest that the presence of comorbidities increases the mortality risk in COVID-19 patients.

Table 1 Study characteristics

Study	Study design	Patient population	Country	Groups	Sample size	Age ^a	Male, n (%)	Main outcome
Pérez-Belmonte et al ¹⁸	Retrospective cohort	T2DM	Spain	Metformin	825	74.9 (8.4)	1647 (61.9)	Use of metformin showed no significant association with in-hospital deaths
				No metformin	663			
Bramante et al ¹⁷	Retrospective cohort	T2DM or obesity	United States	Metformin	2333	73.0 (66.0, 80.0)	1204 (51.6)	Metformin use not significantly associated with decreased mortality in the overall sample
				No metformin	3923			
Chen, 2020 ⁴	Retrospective cohort	T2DM	China	Metformin	43	62.0 (56.0–69.0)	421 (46.57)	Multivariable regression analyses indicated no association of metformin with in-hospital death
				No metformin	77			
Cheng et al ¹⁹	Retrospective cohort	T2DM	China	Metformin	678	62.0 (55.0–68.0)	365 (53.8)	Metformin was not associated with increased mortality
				No metformin	535			
Crouse et al ¹⁶	Retrospective cohort	T2DM	United States	Metformin	76	NA	NA	Mortality risk is reduced in subjects taking metformin. Multiple logistic regression analysis revealed metformin to be an independent factor affecting mortality
				No metformin	144			
Jiang et al ²¹	Retrospective cohort	T2DM	China	Metformin	100	64.0 (56.5–70.0)	49 (49.0)	No significant association between metformin use and mortality
				No metformin	228			
Jinghong, 2020 ³²	Retrospective cohort	T2DM	China	Metformin	37	64.6 ± 11.2	22 (59.5)	Significant association between metformin use and survival. Multivariate analysis revealed metformin to be an independent predictor of survival
				No metformin	94			
Lalauet al ²²	Retrospective cohort	T2DM	France	Metformin	1496	68.5 ± 11.9	1000 (66.8)	Metformin use is associated with a lower risk of death in patients with diabetes
				No metformin	953			
Lally et al ²³	Retrospective cohort	T2DM/ non-T2DM	United States	Metformin	127	72.3 (8.3)	125 (98.4)	Subjects taking metformin were at significantly reduced hazard of death
				No metformin	69			
Luo et al ³¹	Retrospective cohort	T2DM	China	Metformin	104	63.0 (55.8–68.3)	53 (51.0)	Metformin use was significantly associated with decreased mortality
				No metformin	179			

Abbreviations: N, number of subjects; NA, not available; T2DM, type 2 diabetes mellitus.
^aData presented as mean (standard deviation [SD]) or median (interquartile range [IQR]).

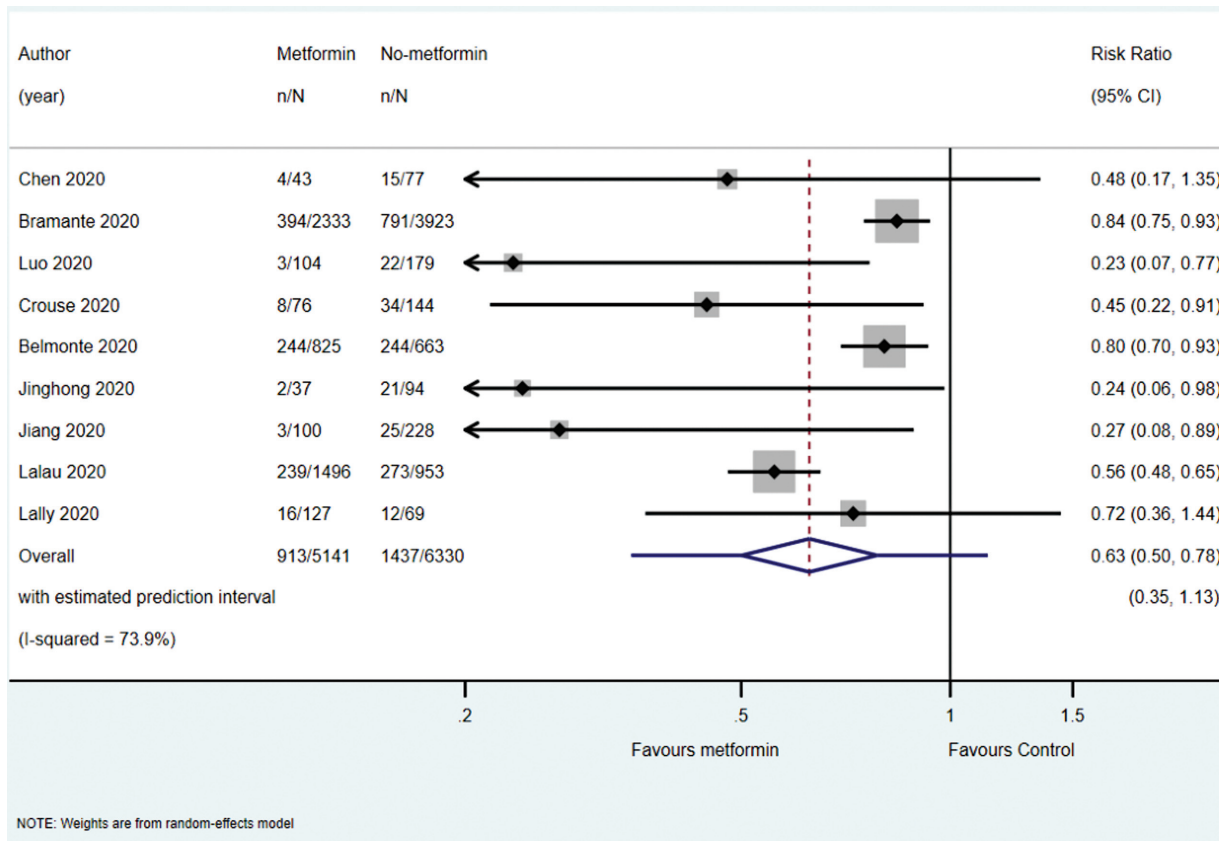


Fig. 2 Association of metformin use and mortality in covid-19 patients.

Table 2 Random-effects meta-analysis results between metformin and control groups for hospitalization and laboratory parameters

Outcomes	No. of studies	Sample size	MD	95% CI	p-value	I-squared (%)	Heterogeneity statistic (p-value)
Hospitalization (d)	4	1,646	1.07	-0.55 to 2.69	0.197	0.0	0.18 (0.758)
Hematologic parameters (10⁹/L)							
White blood cells	3	731	0.01	-0.29 to 0.31	0.953	0.0	1.79 (0.409)
Neutrophils	2	403	-0.11	-0.48 to 0.26	0.561	0.0	0.61 (0.436)
Lymphocytes	3	731	0.12	-0.02 to 0.28	0.085	39.2	3.29 (0.193)
Monocytes	2	403	-0.02	-0.08 to 0.05	0.650	51.7	2.07 (0.150)
Platelets	2	403	12.57	-12.46 to 37.57	0.324	45.8	1.84 (0.174)
Eosinophils	1	283	0.02	0.002 to 0.04	0.034	-	-
Biochemical parameters							
ALT (U/L)	3	731	0.02	-2.27 to 2.31	0.986	0.0	0.41 (0.815)
AST (U/L)	3	731	-1.66	-6.11 to 2.78	0.464	78.3	9.20 (0.010)
Urea (mmol/L)	2	403	-0.65	-1.49 to 0.19	0.129	53.8	2.16 (0.141)
LDH (U/L)	1	328	-12.30	-28.79 to 4.19	0.144	-	-
Ferritin (µg/L)	1	328	78.47	-53.00 to 209.94	0.242	-	-
Albumin (g/L)	1	328	2.23	1.034 to 3.433	< 0.001	-	-
Triglyceride (mmol/L)	1	131	0.12	-0.18 to 0.42	0.432	-	-
FBG (mmol/L)	2	611	1.00	-0.59 to 2.58	0.218	71.7	3.53 (0.060)
HbA1c (%)	1	328	0.70	0.27 to 1.13	0.001	-	-

(Continued)

Table 2 (Continued)

Outcomes	No. of studies	Sample size	MD	95% CI	p-value	I-squared (%)	Heterogeneity statistic (p-value)
HbA1c (mmol/L)	1	131	1.77	0.98 to 2.56	< 0.001	–	–
eGFR (mL/min)	1	1,213	3.43	0.55 to 6.32	0.020	–	–
γ-Glutamyltransferase	1	283	–0.23	–5.33 to 4.86	0.928	–	–

Abbreviations: ALT, alanine aminotransferase; AST, aspartate aminotransferase; CI, confidence interval; eGFR, estimated glomerular filtration rate; FBG, fasting blood glucose; HbA1c, hemoglobin A1c; LDH, lactic dehydrogenase; MD, weighted mean difference.

Table 3 Random-effects meta-analysis results between metformin and control groups for comorbidities, clinical severity, oxygen support and treatments

Outcomes	No. of studies	Sample size	RR	95% CI	p-value	I-squared (%)	Heterogeneity statistic (p-value)
Comorbidities							
Overweight	1	28	0.56	0.24–1.32	0.184	–	–
Obese	1	465	0.53	0.43–0.65	< 0.001	–	–
Weight loss	1	26	0.63	0.31–1.29	0.210	–	–
Hypertension	4	5,873	0.93	0.91–0.96	< 0.001	0.0	1.85 (0.603)
Heart failure	2	282	0.41	0.33–0.51	< 0.001	0.0	0.38 (0.536)
Cerebrovascular disease	1	45	0.48	0.27–0.86	0.015		
Dementia	2	1,071	0.81	0.58–1.13	0.213	88.1	8.39 (0.004)
COPD	4	1,241	0.71	0.62–0.81	< 0.001	9.3	3.31 (0.346)
Clinical severity							
Moderately ill	1	66	1.19	0.78–1.83	0.421	–	–
Seriously ill	1	207	0.98	0.84–1.13	0.768	–	–
Critically ill	1	10	0.43	0.09–1.99	0.280	–	–
Severe	1	103	0.81	0.56–1.17	0.265	–	–
Nonsevere	1	225	1.10	0.94–1.27	0.237	–	–
Oxygen support							
Ambient air	1	66	1.19	0.78–1.83	0.421	–	–
Noninvasive oxygen support	1	211	0.97	0.84–1.12	0.667	–	–
Invasive ventilation	1	9	0.62	0.13–3.02	0.551	–	–
Nasal canula	1	69	1.44	1.06–1.97	0.020	–	–
Nonrebreathing mask	1	7	0.17	0.01–2.85	0.216	–	–
High-flow oxygen	1	7	0.42	0.05–3.39	0.419	–	–
Room air	1	26	0.76	0.33–1.75	0.521	–	–
Noninvasive ventilation	1	19	0.68	0.24–1.91	0.461	–	–
Concomitant medications							
Insulin	4	3,427	0.85	0.59–1.22	0.386	96	75.33 (<0.001)
Other oral antidiabetic treatment	4	1,948	1.50	1.22–1.85	< 0.001	85.8	21.06 (<0.001)
Chloroquine/hydroxychloroquine	2	80	0.75	0.31–1.83	0.522	65.4	2.89 (0.089)
Anticoagulants	4	2,977	0.70	0.53–0.94	0.015	93	42.67 (<0.001)
Glucocorticoids/steroids	4	1,948	0.80	0.56–1.16	0.240	90.7	32.14 (<0.001)
B-blockers	2	4,268	0.82	0.61–1.11	0.203	96.6	29.17 (<0.001)
Antibacterial treatment	2	1,058	1.00	0.90–1.10	0.975	0	0 (0.986)

Table 3 (Continued)

Outcomes	No. of studies	Sample size	RR	95% CI	p-value	I-squared (%)	Heterogeneity statistic (p-value)
Statins	3	5,698	1.15	1.05–1.27	0.004	65.4	5.79 (0.055)
Diuretics	1	989	0.69	0.63–0.756	< 0.001	–	–
ARBs and/or ACE inhibitors	2	5,137	1.22	1.01–1.46	0.037	95.2	20.64 (<0.001)
Antiplatelet	2	1,999	0.91	0.84–0.98	0.010	0	0.26 (0.611)
Antivirals	3	796	1.08	1.03–1.13	0.001	0	1.24 (0.5307)
Overall	33	30,325	0.95	0.86–1.04	0.276	96.8	1,008.44 (<0.001)

Abbreviations: ACE, angiotensin-converting enzyme; ARB, angiotensin receptor blockers; CI, confidence interval; COPD, chronic obstructive pulmonary disease; RR, relative risk.

Diabetes forms an important risk factor to predict the adverse outcomes.¹ Several studies have demonstrated high mortality rate in type 2 diabetes mellitus patients^{1,5,6,24}; however, the effect of antidiabetics on the mortality remains to be elucidated.²⁵ Thus, the present meta-analysis was conducted to assess the association of metformin use with mortality in COVID-19 patients. The present meta-analysis was based on data from nine studies on COVID-19 patients. The analysis demonstrated lower mortality in the group receiving metformin; however, no significant difference in hospitalization days was observed between the two groups. The analysis also revealed significant difference in the prevalence of obesity, hypertension, heart failure, cerebrovascular disease and COPD. No significant difference was observed in clinical severity between the two groups.

Several retrospective cohort studies have demonstrated low mortality in patients receiving metformin.^{15,17,24,25} In line with our findings, other meta-analysis have revealed a significantly lower mortality in patients receiving metformin.^{7,26} Retrospective cohort studies have shown metformin use to be an independent factor associated with mortality.^{16,20} However, retrospective cohort studies have revealed no difference in hospitalization days.^{20,21} Additionally, no difference in the clinical severity between the groups receiving and not receiving metformin was revealed in retrospective cohort studies.^{15,21} Furthermore, retrospective cohort studies have reported a lower number of patients with obesity,¹⁷ hypertension,^{17,22} heart failure,^{19,22} cerebrovascular disease,¹⁹ and COPD²² in patients receiving metformin.

The potential mechanisms underlying the reduction of mortality by metformin in COVID-19 patients remain unclear.⁷ However, several mechanisms have been proposed for the same. Metformin is thought to increase the expression of angiotensin converting enzyme 2 (ACE2),^{2,27–29} a receptor for severe acute respiratory syndrome coronavirus 2.² Metformin has been demonstrated to activate adenosine monophosphate-activated protein kinase (AMPK) in in vitro and in vivo experiments,^{2,7} thus regulating ACE2 and protein stability.² Activation of AMPK further leads to the inhibition of nuclear factor kappa B (NF- κ B), which is a transcription regulator involved in inflammation. Inhibition of NF- κ B subsequently inhibits the production of proinflammatory cytokines, such as

interleukins 8 and 1 α .⁷ Metformin is also suggested to have antithrombotic effects. Evidence suggests excessive inflammatory responses as well as disseminated thromboembolic events are associated with increased mortality in COVID-19 patients.³⁰ Therefore, metformin is suggested to have beneficial effect by its antifibrinolytic activities³⁰ and inhibiting the cytokine storm in COVID-19 patients.⁷ Additionally, metformin induces autophagy, thus controlling inflammation and activating innate and adaptive immunity.³¹ Furthermore, metformin is suggested to act on Na⁺/H⁺ exchangers and vacuolar ATPase, subsequently inhibiting viral infection by raising the cellular pH leading to interference with the endocytic cycle.

This study had several limitations. A small number of studies have been included in the meta-analysis; retrospective cohort studies were included, and substantial heterogeneity was observed among the studies, which poses a significant limitation for the conclusions drawn. Although an extensive search was done, studies might have been missed inadvertently. Exclusion of studies in languages other than English might have resulted in missing of relevant studies.

Conclusion

To conclude, our findings suggest that metformin may contribute to reduced mortality in COVID-19 patients. However, randomized studies demonstrating the effects of metformin in COVID-19 are needed to support clinical recommendations of metformin in high-risk population. Further investigations are warranted to look into the likelihood of metformin improving prognosis of COVID-19.

Authors Contribution

All the authors contributed in conception or design. RP, PM, and RL contributed in acquisition of data. RB and NA contributed in data analysis and interpretation. All the authors contributed to the preparation of manuscript or critically revising the manuscript and gave their final approval for the manuscript.

Funding

None.

Conflict of Interest

None declared.

References

- 1 Parveen R, Sehar N, Bajpai R, Agarwal NB. Association of diabetes and hypertension with disease severity in covid-19 patients: a systematic literature review and exploratory meta-analysis. *Diabetes Res Clin Pract* 2020;166:108295
- 2 Lui DTW, Tan KCB. Is metformin a miracle or a menace in COVID-19 patients with type 2 diabetes? *J Diabetes Investig* 2021;12(04):479–481
- 3 Gao Y, Liu T, Zhong W, et al. Risk of metformin in patients with type 2 diabetes with COVID-19: a preliminary retrospective report. *Clin Transl Sci* 2020;13(06):1055–1059
- 4 Chen T, Wu D, Chen H, et al. Clinical characteristics of 113 deceased patients with coronavirus disease 2019: retrospective study. *BMJ* 2020;368:m1091
- 5 Zhou F, Yu T, Du R, et al. Clinical course and risk factors for mortality of adult inpatients with COVID-19 in Wuhan, China: a retrospective cohort study. *Lancet* 2020;395(10229):1054–1062
- 6 Cariou B, Hadjadj S, Wargny M, et al; CORONADO investigators. Phenotypic characteristics and prognosis of inpatients with COVID-19 and diabetes: the CORONADO study. *Diabetologia* 2020;63(08):1500–1515
- 7 Kow CS, Hasan SS. Mortality risk with preadmission metformin use in patients with COVID-19 and diabetes: a meta-analysis. *J Med Virol* 2021;93(02):695–697
- 8 Davis BJ, Xie Z, Viollet B, Zou M-H. Activation of the AMP-activated kinase by antidiabetes drug metformin stimulates nitric oxide synthesis in vivo by promoting the association of heat shock protein 90 and endothelial nitric oxide synthase. *Diabetes* 2006;55(02):496–505
- 9 Hattori Y, Suzuki K, Hattori S, Kasai K. Metformin inhibits cytokine-induced nuclear factor kappaB activation via AMP-activated protein kinase activation in vascular endothelial cells. *Hypertension* 2006;47(06):1183–1188
- 10 Moher D, Liberati A, Tetzlaff J, Altman DGPRISMA Group. Preferred reporting items for systematic reviews and meta-analyses: the PRISMA statement. *PLoS Med* 2009;6(07):e1000097
- 11 Stroup DF, Berlin JA, Morton SC, et al. Meta-analysis of observational studies in epidemiology: a proposal for reporting. Meta-analysis Of Observational Studies in Epidemiology (MOOSE) group. *JAMA* 2000;283(15):2008–2012
- 12 NIH. Study Quality Assessment Tools. National Heart, Lung and Blood Institute n.d. Accessed June 9, 2020 at: <https://www.nhlbi.nih.gov/health-topics/study-quality-assessment-tools>
- 13 Higgins J, Green S. *Quality Assessment of Systematic Reviews and Meta-analysis*. New York, NY: John Wiley and Sons Ltd.; 2011
- 14 Dalton JE, Bolen SD, Mascha EJ. Publication bias: the elephant in the review. *Anesth Analg* 2016;123(04):812–813
- 15 Luo P, Qiu L, Liu Y, et al. Metformin treatment was associated with decreased mortality in COVID-19 patients with diabetes in a retrospective analysis. *Am J Trop Med Hyg* 2020;103(01):69–72
- 16 Crouse A, Grimes T, Li P, Might M, Ovalle F, Shalev A. Metformin use is associated with reduced mortality in a diverse population with Covid-19 and diabetes. *Front Endocrinol (Lausanne)* 2021;13;11:600439
- 17 Bramante CT, Ingraham NE, Murray TA, et al. Observational study of metformin and risk of mortality in patients hospitalized with Covid-19. *Lancet Healthy Longev* 2021;2(01):e34–e41
- 18 Pérez-Belmonte LM, Torres-Peña JD, López-Carmona MD, et al; SEMI-COVID-19 Network. Mortality and other adverse outcomes in patients with type 2 diabetes mellitus admitted for COVID-19 in association with glucose-lowering drugs: a nationwide cohort study. *BMC Med* 2020;18(01):359
- 19 Cheng X, Liu Y-M, Li H, et al. Metformin is associated with higher incidence of acidosis, but not mortality, in individuals with COVID-19 and pre-existing type 2 diabetes. *Cell Metab* 2020;32(04):537–547.e3
- 20 Li J, Wei Q, Li WX, et al. Metformin use in diabetes prior to hospitalization: effects on mortality in Covid-19. *Endocr Pract* 2020;26(10):1166–1172
- 21 Jiang N, Chen Z, Yin X, et al. Association of metformin with mortality or ARDS in patients with COVID-19 and type 2 diabetes: a retrospective cohort study. *Diabetes Res Clin Pract* 2021;173:108619
- 22 Lalau J-D, Al-Salameh A, Hadjadj S, et al. CORONADO investigators. Metformin use is associated with a reduced risk of mortality in patients with diabetes hospitalised for COVID-19. *Diabetes Metab* 2021;47(05):101216
- 23 Lally MA, Tsoukas P, Halladay CW, O'Neill E, Gravenstein S, Rudolph JL. Metformin is associated with decreased 30-day mortality among nursing home residents infected with SARS-CoV2. *J Am Med Dir Assoc* 2021;22(01):193–198
- 24 Chen Y, Yang D, Cheng B, et al. Clinical Characteristics and outcomes of patients with diabetes and COVID-19 in association with glucose-lowering medication. *Diabetes Care* 2020;43(07):1399–1407
- 25 Wong CKH, Lui DTW, Lui AYC, et al. Metformin use in relation to clinical outcomes and hyperinflammatory syndrome among COVID-19 patients with type 2 diabetes: a propensity score analysis of a territory-wide cohort. *Front Endocrinol (Lausanne)* 2022;13:810914
- 26 Hariyanto TI, Kurniawan A. Metformin use is associated with reduced mortality rate from coronavirus disease 2019 (COVID-19) infection. *Obes Med* 2020;19:100290
- 27 McLachlan CS. The angiotensin-converting enzyme 2 (ACE2) receptor in the prevention and treatment of COVID-19 are distinctly different paradigms. *Clin Hypertens* 2020;26:14
- 28 Bailey CJ, Gwilt M. Diabetes, metformin and the clinical course of Covid-19: outcomes, mechanisms and suggestions on the therapeutic use of metformin. *Front Pharmacol* 2022;13:784459
- 29 Kow CS, Ramachandram DS, Hasan SS. Metformin in COVID-19: clinical trials are needed to prove its benefits. *Ir J Med Sci* 2022;191(06):2641–2642
- 30 Crouse AB, Grimes T, Li P, Might M, Ovalle F, Shalev A. Metformin use is associated with reduced mortality in a diverse population with COVID-19 and diabetes. *Front Endocrinol (Lausanne)* 2021;11:600439
- 31 Esam Z. A proposed mechanism for the possible therapeutic potential of Metformin in COVID-19. *Diabetes Res Clin Pract* 2020;167:108282
- 32 Li J, Wei Q, Li WX, et al. Metformin Use in Diabetes Prior to Hospitalization: Effects on Mortality in Covid-19. *Endocr Pract* 2020;26(10):1166–1172